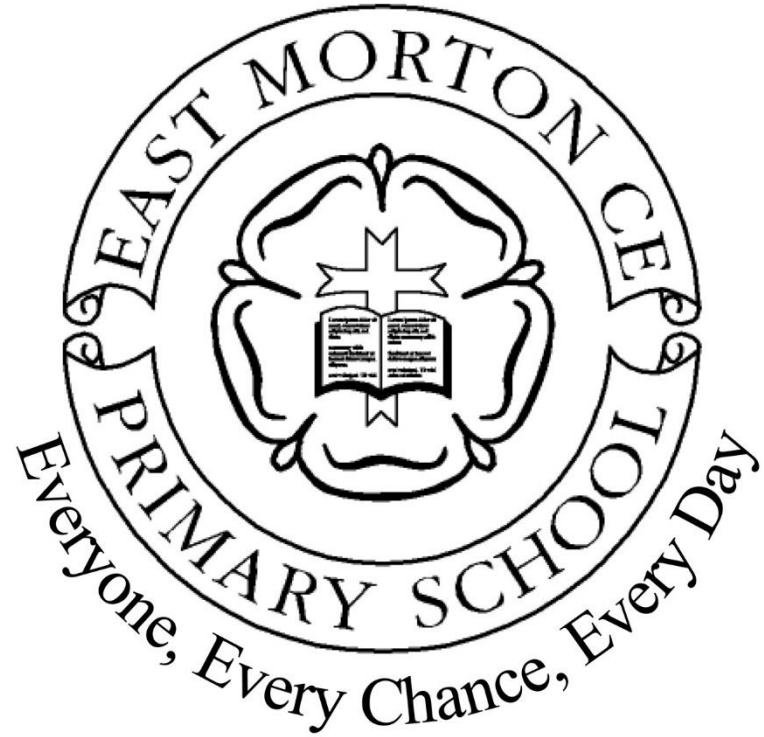
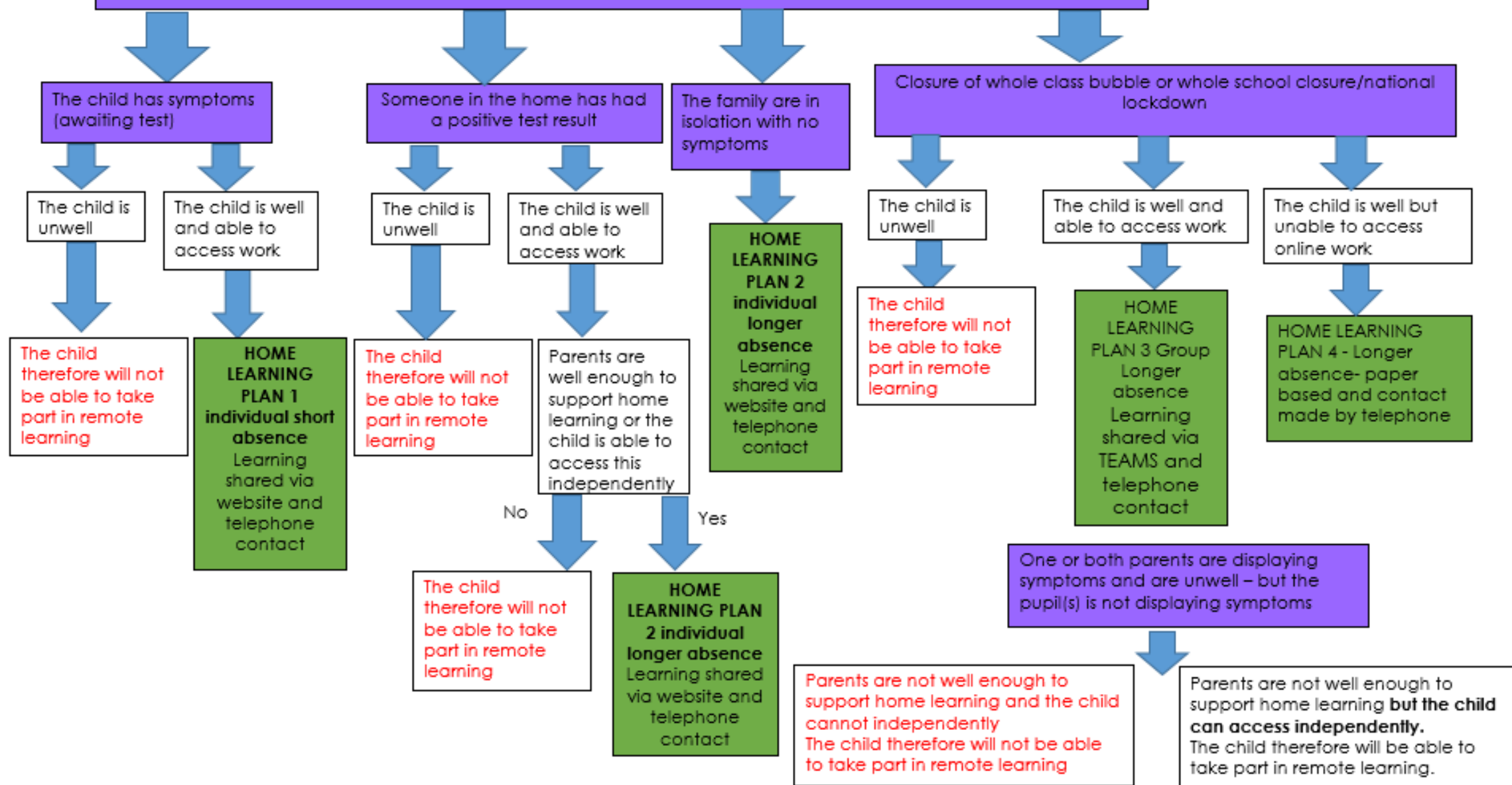


Remote Learning Flow chart



HOME LEARNING PLANS



Home Learning Plan	Circumstances	School Based Contingency	
Plan 1 Individual Short Absence	Household member with symptoms and awaiting test results.	<p>Children/parents directed to relevant page on the school website</p> <ul style="list-style-type: none"> • Daily reading • Learning of weekly Spellings and Learn by Hearts, or completion of other homework (KS2 Maths and English) • Links to a range of websites to support learning : Purple Mash, Charanga, Phonics Play, Times table Rock Stars, Spelling Shed, Education City. 	
Plan 2 Individual Longer Absence	Child isolating due to positive case within the household or contacted by track and trace and told to isolate.	<p>Children/parents directed to relevant page on the school website</p> <p>The Oak National Academy online resource will be used for daily English and maths as well as weekly PE, PHSE, RE and Science lessons (where lessons align to current curriculum)</p> <p>Learning Challenge (which covers History, Geography and some Art) will be provided in the form of a Home Learning booklet (emailed or paper versions) Teacher to record engagement of child and make contact at least once per week to give feedback and provide support via email or telephone.</p>	
Plan 3 Group Longer Absence	Bubble closure or lockdown.	<p>Bubble Closure</p> <p>Children/parents directed to use Microsoft Teams</p> <p>White Rose Maths Home Learning to be followed</p> <p>Talk for Writing English Booklet to be used for English</p> <p>The Oak National Academy online resource will be used weekly PE, PHSE, RE and Science lessons (where lessons align to current curriculum)</p> <p>Learning Challenge (which covers History, Geography and some Art) will be provided in the form of a Home Learning booklet (or paper versions where required)</p> <p>Teacher to note engagement of child and make contact at least once per week to give feedback and provide support via email or telephone.</p>	<p>Whole School Closure/ National Lockdown</p> <p>Children/parents directed to use Microsoft Teams</p> <p>Daily Check In Teams Meetings with teacher for all learners in/out of school or telephone contact where needed</p> <p>Collective Worship to be shared via Teams or email</p> <p>White Rose Maths Home Learning to be followed, sheets accessed via Teams</p> <p>School-made lessons and supporting resources to be assigned for English</p> <p>Science longer project based tasks set</p> <p>Learning Challenge (which covers History, Geography and some Art) Home Learning booklet</p> <p>Teacher/Specialist made PE challenges and lessons shared</p> <p>PHSE and RE signposted from a variety of sources</p> <p>The Oak National Academy online resource will be used to support learning where needed to maintain breadth</p> <p>In the event of full lockdown -Teaching staff on a rota system to supervise key worker and vulnerable children (these children will follow online curriculum alongside home based peers).</p>
Plan 4 Longer absence- Limited access	Bubble closure or lockdown.	<p>Paper based learning packs for pre-identified pupils with limited online access.</p> <p>Daily telephone call to these children to support and provide feedback.</p>	